

## Scale and arpeggio patterns

The examples on the following pages clarify patterns and ranges found in this syllabus. Reference should be made to the appropriate syllabus pages for the full requirements for each instrument.

### All instruments

#### Scales and arpeggios

to a twelfth



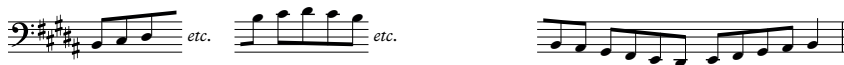
one octave and down to the dominant



## Bass Trombone

### Extended-range scales

B major



E $\flat$  major



D harmonic minor



### Extended-range arpeggios

B major



E $\flat$  major



D minor

